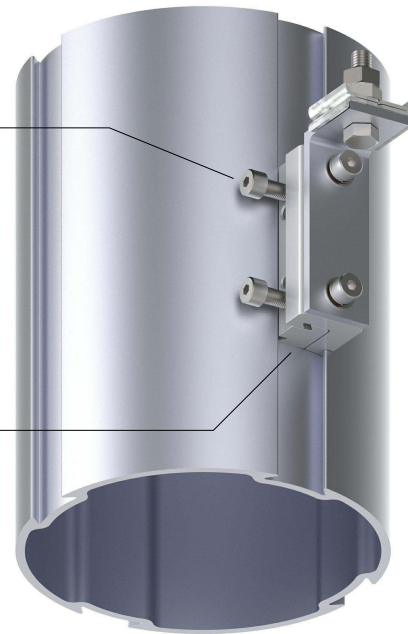


ISSUE	C.O. No.	REVISION	LOCATION	BY	DATE
A		NOTE REGARDING CABLE EXIT			13/07/22
B		ASSEMBLY INSTRUCTION			09/09/23

1

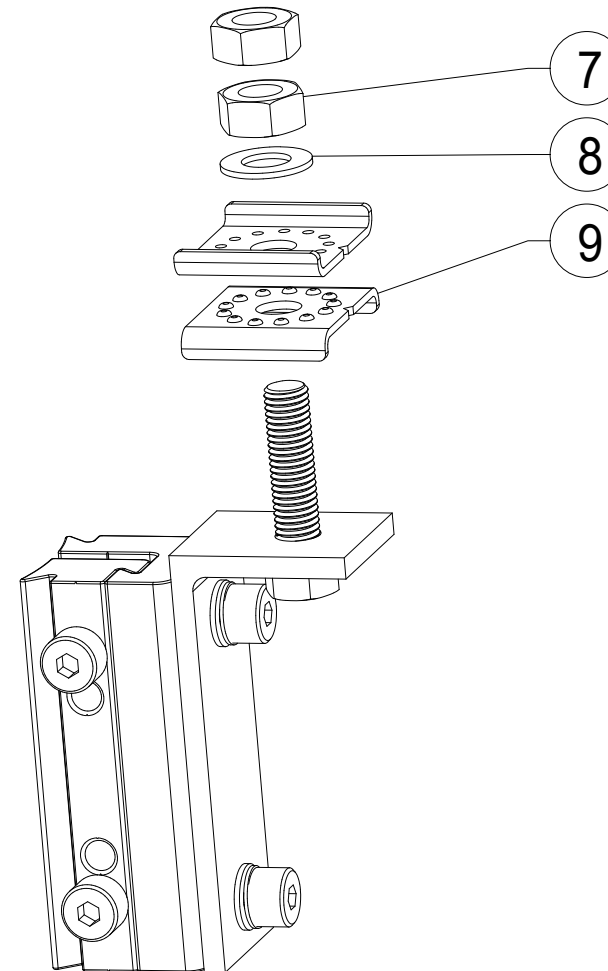
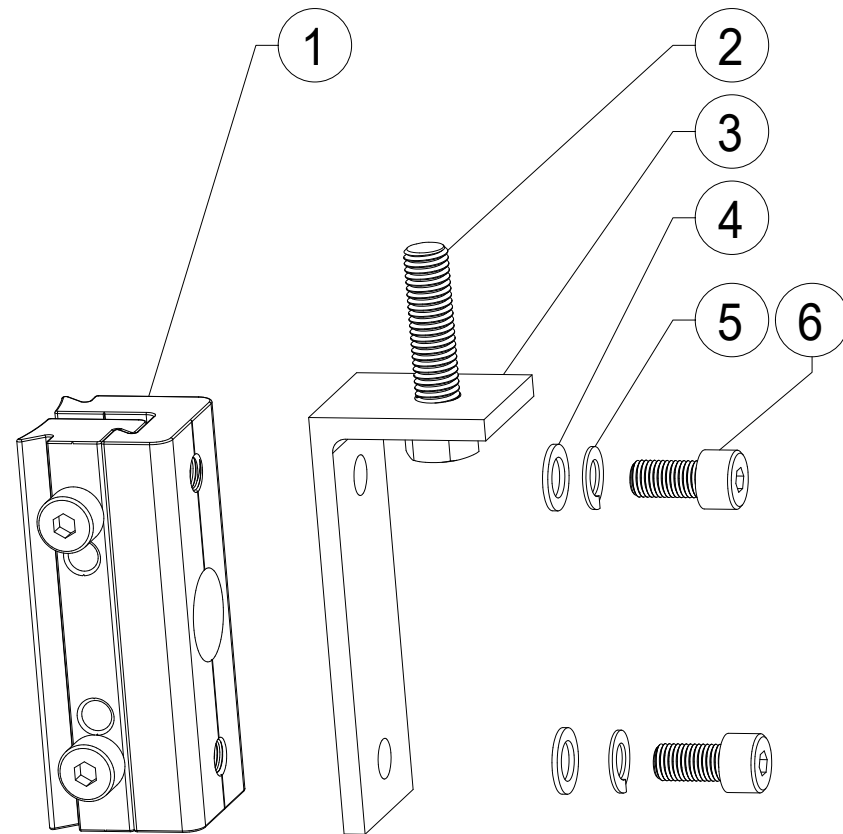
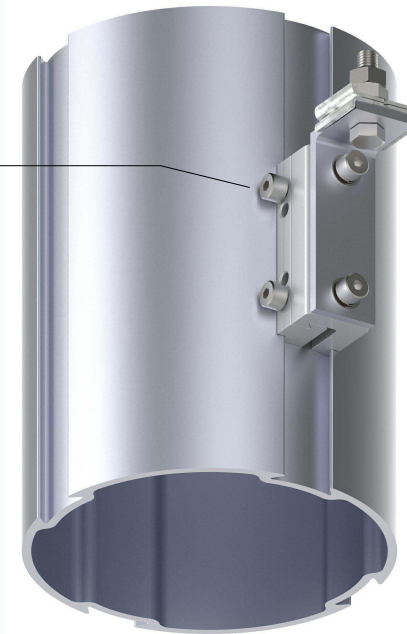
BACK OUT M10 SCREWS

COLAPSE BRACKET HALVES AND INSERT INTO TRACK



2

TIGHTEN M10 SCREWS
TORQUE 30 Nm



NOTE
CABLE ENTRY
REFER UA-0806 CABLE EXIT

NOTE
PEDESTRIAN LANTERN
IDENTICAL ASSEMBLY DETAIL TO THE HEREIN DESCRIBED TRAFFIC LANTERN

NOTE
AUDIO TACTILE
USES 1 x UA ACCESSORIES BRACKET ONLY WITH COMMENSURATE FIXINGS

COPYRIGHT URBAN ALUMINIUM 2019

No.	PART NAME	Qty	FINISH
1	UA ACCESSORIES BRACKET	2	N/A
2	M12 x 50 HEX BOLT (LOCTITE 680)	2	STAINLESS STEEL
3	TL BRACKET (UA-0147 TL BRACKET)	2	ANODIZED 20 Um
4	M10 FLAT WASHER	4	ANODIZED 20 Um
5	M10 SPRING WASHER	4	STAINLESS STEEL
6	M10 x 20 SOCKET HEAD CAP SCREW	4	STAINLESS STEEL
7	M12 NUT	4	STAINLESS STEEL
8	M12 FLAT WASHER	4	STAINLESS STEEL
9	LOCK WASHER	4	STAINLESS STEEL

DO NOT SCALE DRAWING
DIMENSIONS IN MILLIMETRES

THIRD ANGLE PROJECTION

DIMENSION TOLERANCES UNLESS OTHERWISE SPECIFIED
2 PLACE DECIMAL 0.00 ± 0.1mm
1 PLACE DECIMAL 0.0 ± 0.25mm
0 PLACE DECIMAL 0 ± 0.50mm
ANGULAR ± 15 MINUTES (0.25°)

SHEET

Urban Aluminium Pty Ltd
www.urban-al.com.au
info@urban-al.com.au

Unit 30, 1 Talavera Road Macquarie Park
NSW 2113 AUSTRALIA
Tel. +612 8921 5400

DRAWN BY
AC

CHECKED BY

APPROVED BY

QUALITY APPROVED BY

DATE
2.7.19

DATE

DATE

DATE

DOCUMENT No.

DISC FILE No.

SCALE

ISSUE B

DATE RELEASED

ITEM No.

PROJECT

PART No.

TITLE

UA RMS - TRAFFIC LANTERN BRACKET

PROJECT

PART No.

UrbanAluminium™
FUTURE SMART



MULTI-FUNCTION POLES

SHEET No.

DRAWING No.
UA-0146

SHEET No.