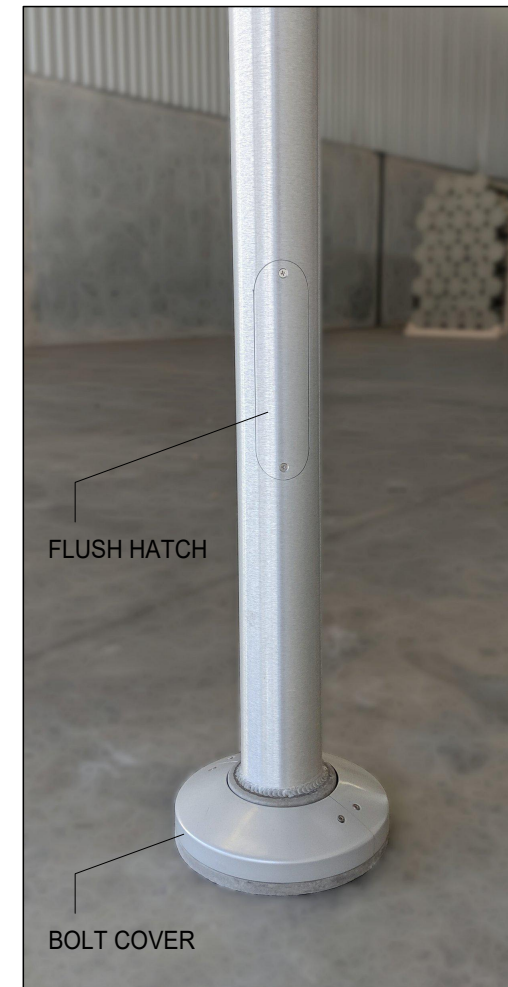
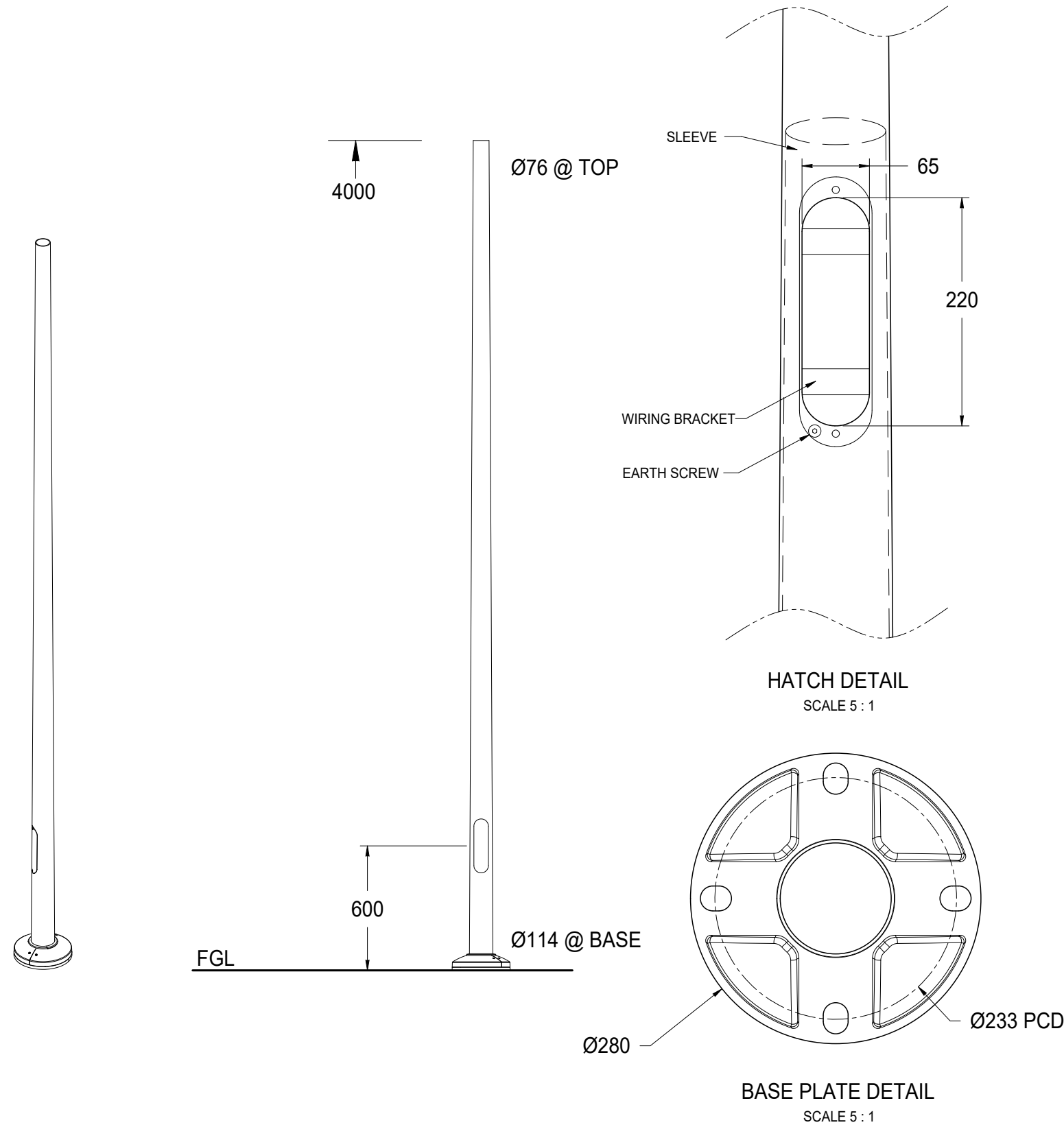


ISSUE	C.O. No.	REVISION	LOCATION	BY	DATE



MATERIAL = MAST ALUMINIUM 6063 T6 - 3 mm
SLEEVE ALUMINIUM 6063 T6 - 3 mm

**Foundation bolts
M20 @ 233 PCD**

NOTE
All poles manufactured in accordance with relevant standards (AUS/NZ 1158)

Pole footings to be engineered by others to suit local environmental and ground conditions.

NOTE - FINISH OPTIONS

Finish = BRUSHED + ANODIZED
Option = POWDER COAT

IP 65 rated electrical enclosures to be used for electrical connections.
All buried components to be coated with DUREBILD STE 150 microns

DO NOT SCALE DRAWING
DIMENSIONS IN MILLIMETRES

THIRD ANGLE PROJECTION

DIMENSION TOLERANCES UNLESS OTHERWISE SPECIFIED
2 PLACE DECIMAL 0.00 \pm 0.1mm
1 PLACE DECIMAL 0.0 \pm 0.25mm
0 PLACE DECIMAL 0 \pm 0.50mm
ANGULAR \pm 15 MINUTES (0.25°)

SHEET

Urban Aluminium Pty Ltd
www.urban-al.com.au
info@urban-al.com.au

DRAWN BY
AC

CHECKED BY

APPROVED BY

QUALITY APPROVED BY

DATE
18/03/21

DATE

DATE

DATE

Unit 10, 7 Gundah Rd, Mt Kuring-Gai
NSW 2080 AUSTRALIA
Tel. +612 8921 5400

DOCUMENT No.

DISC FILE No.

SCALE

ISSUE

DATE RELEASED

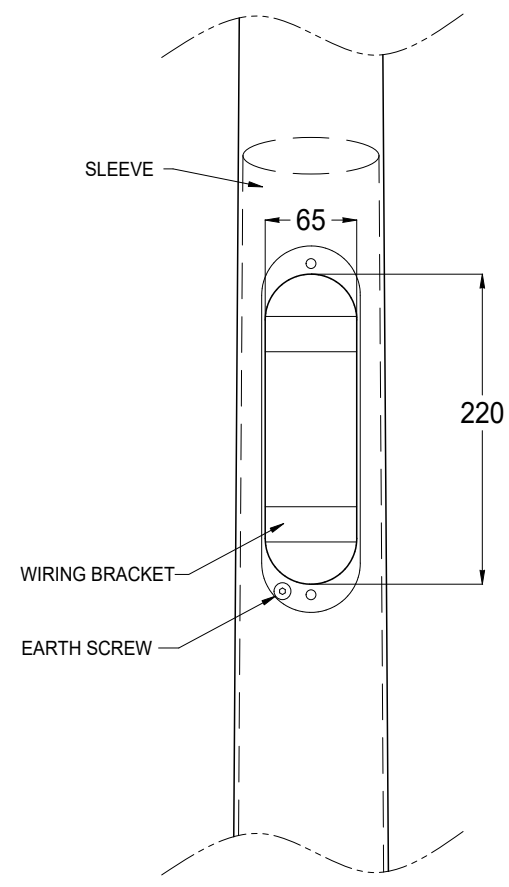
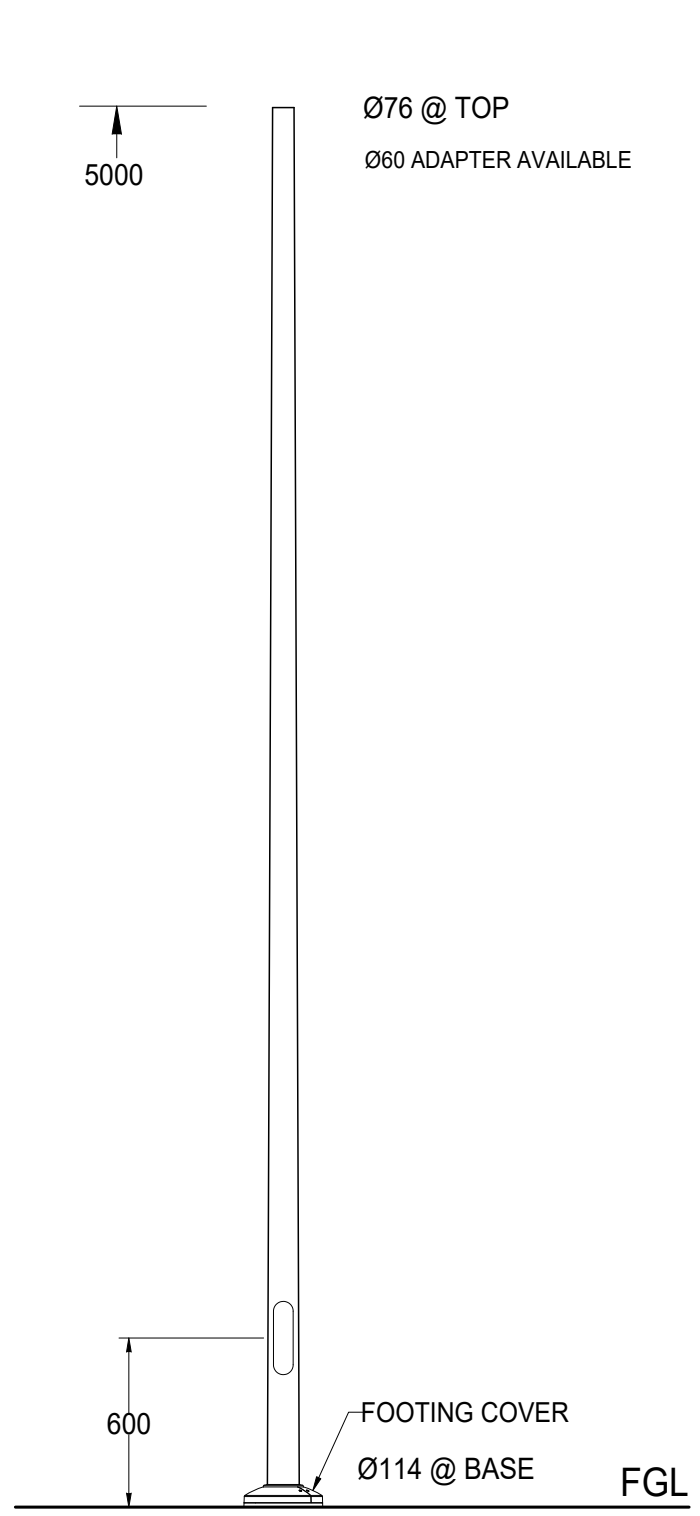
ITEM No.

UrbanAluminium™
FUTURE SMART

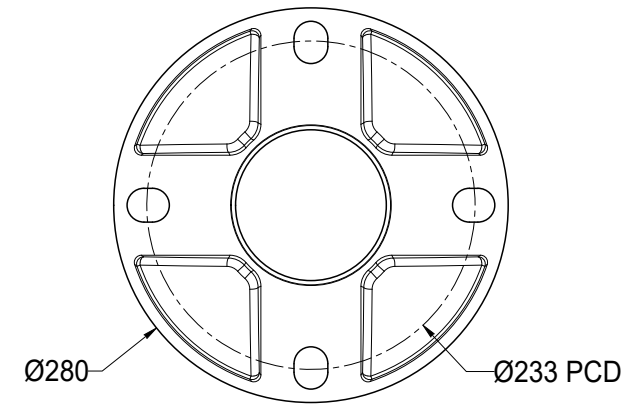


TITLE STEM TAPER 4000 Ø114 - Ø76	
PROJECT STEM POLES	DRAWING No. UA-0536
PART No.	SHEET No.

ISSUE	C.O. No.	REVISION	LOCATION	BY	DATE



HATCH DETAIL
SCALE 5 : 1



BASE PLATE DETAIL
SCALE 5 : 1

MATERIAL = MAST ALUMINIUM 6063 T6 - 3 mm
SLEEVE ALUMINIUM 6063 T6 - 3 mm



**Foundation bolts
M20 @ 233 PCD**

NOTE
All poles manufactured in accordance with relevant standards (AUS/NZ 1158)

Pole footings to be engineered by others to suit local environmental and ground conditions.

NOTE - FINISH OPTIONS

Finish 1 = Brushed + Clear Anodised 15 Um
Finish 2 = Powder Coat Paint

IP 65 rated electrical enclosures to be used for electrical connections.
All buried components to be coated with DUREBILD STE 150 microns

DO NOT SCALE DRAWING
DIMENSIONS IN MILLIMETRES
THIRD ANGLE PROJECTION
DIMENSION TOLERANCES UNLESS OTHERWISE SPECIFIED
2 PLACE DECIMAL 0.00 ± 0.1mm
1 PLACE DECIMAL 0.0 ± 0.25mm
0 PLACE DECIMAL 0 ± 0.50mm
ANGULAR ± 15 MINUTES (0.25°)

DRAWN BY AC	DATE 08/03/23	DOCUMENT No.
CHECKED BY	DATE	DISC FILE No.
APPROVED BY	DATE	SCALE
QUALITY APPROVED BY	DATE	ISSUE

SHEET	Urban Aluminium Pty Ltd www.urban-al.com.au info@urban-al.com.au	Unit 30, 1 Talavera Road, Macquarie Park NSW 2113 AUSTRALIA	DATE RELEASED
ITEM No.			

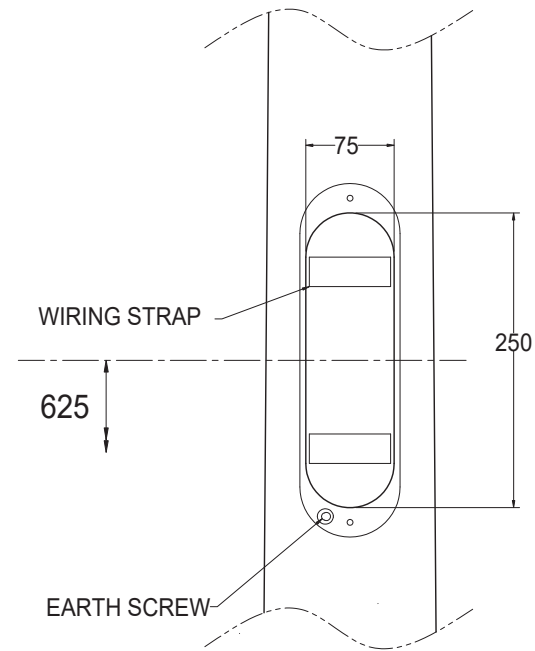
UrbanAluminium™
FUTURE SMART



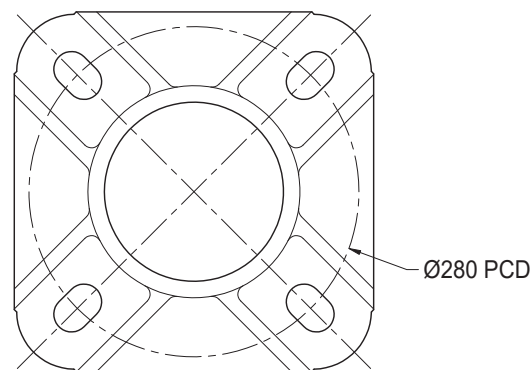
TITLE STEM Ø114 - Ø76 TAPER 5 m	
PROJECT STEM POLES	DRAWING No. UA-1017
PART No.	SHEET No.

ISSUE	C.O. No.	REVISION	LOCATION	BY	DATE

Ø76 POLE TOP
↑
6000

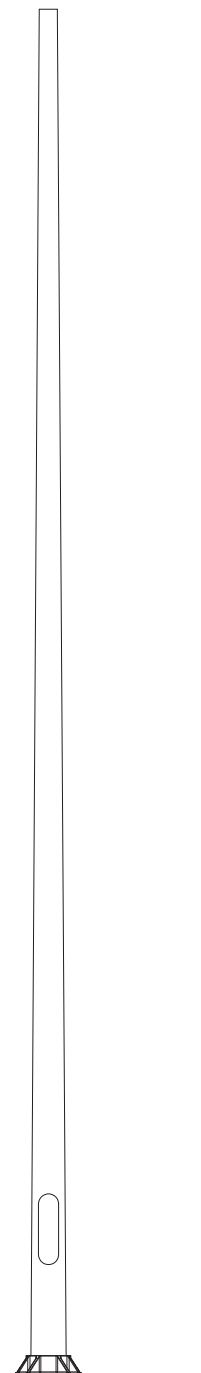


HATCH DETAIL
SCALE 5:1



BASE PLATE
CAST ALUMINIUM
SCALE 5:1

Ø152 POLE BASE



MATERIAL = ALUMINIUM 6063 T6
3.5 mm WALL SECTION



**Foundation bolts
M20 @ 280 PCD**

NOTE
All poles manufactured in accordance with relevant standards

Soil testing, footing design and certification services available on request.

NOTE
Finish = Brushed + Clear Anodised
Finish Option = Powder Coat

IP 65 rated electrical enclosures to be used for electrical connections.

All buried components to be coated with **DUREBILD STE** 150 microns

DO NOT SCALE DRAWING
DIMENSIONS IN MILLIMETRES

THIRD ANGLE PROJECTION

DIMENSION TOLERANCES UNLESS OTHERWISE SPECIFIED
2 PLACE DECIMAL 0.00 ± 0.1mm
1 PLACE DECIMAL 0.0 ± 0.25mm
0 PLACE DECIMAL 0 ± 0.50mm
ANGULAR ± 15 MINUTES (0.25°)

SHEET

Urban Aluminium Pty Ltd
www.urban-al.com.au
info@urban-al.com.au

DRAWN BY
AC

CHECKED BY

APPROVED BY

QUALITY APPROVED BY

DATE
22/09/21

DATE

DATE

DATE

Unit 10, 7 Gundah Rd, Mt Kuring-Gai
NSW 2080 AUSTRALIA
Tel. +612 8921 5400

DOCUMENT No.

DISC FILE No.

SCALE

ISSUE

DATE RELEASED

ITEM No.

UrbanAluminium™
FUTURE SMART



TITLE
STEM TAPER 6 m

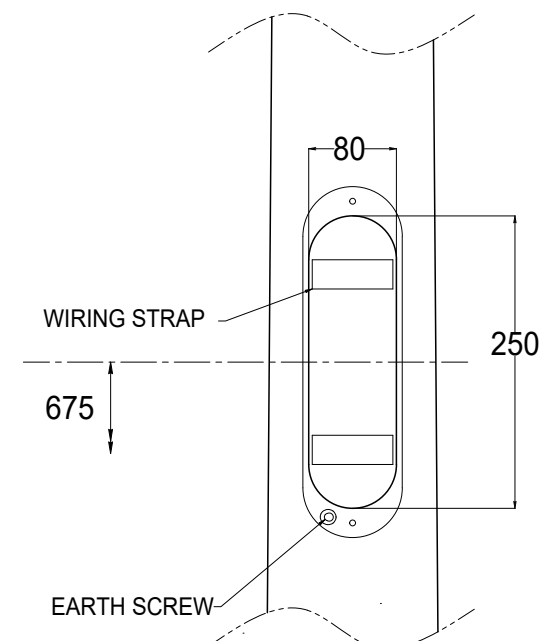
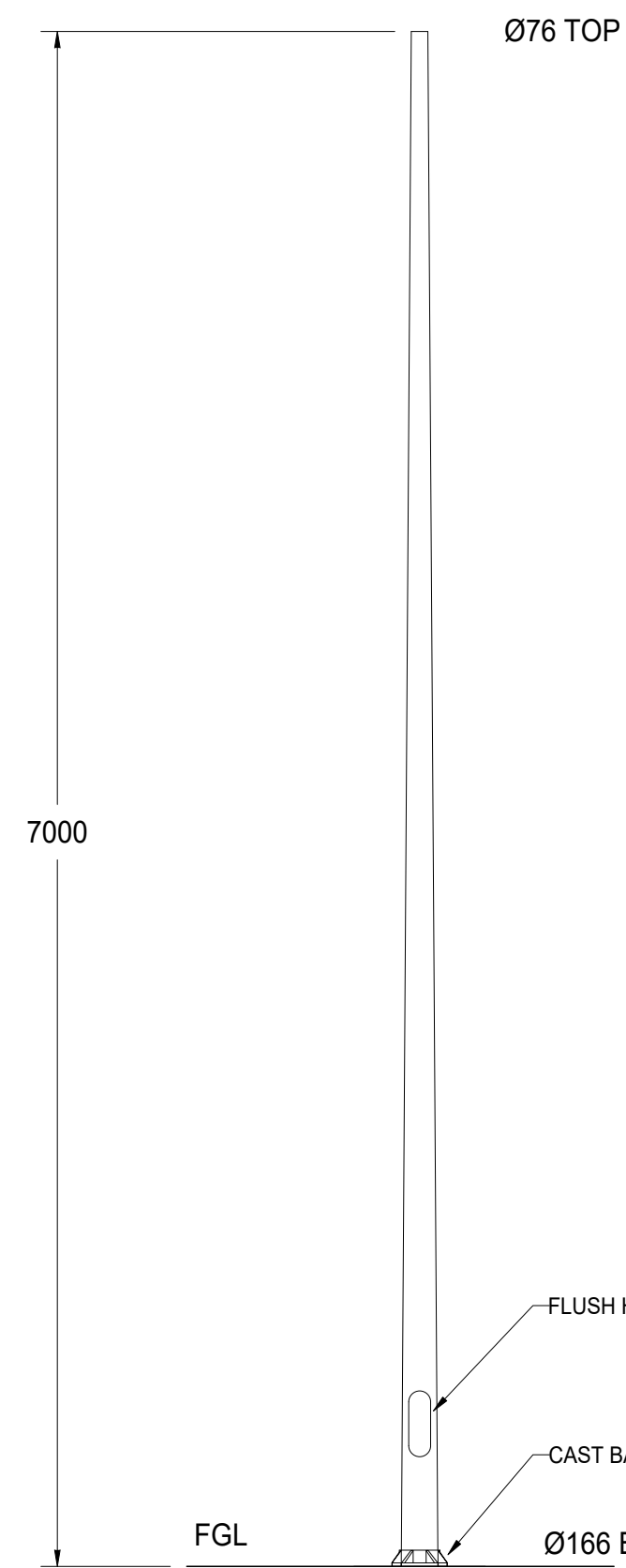
PROJECT
TAPERED POLES

PART No.

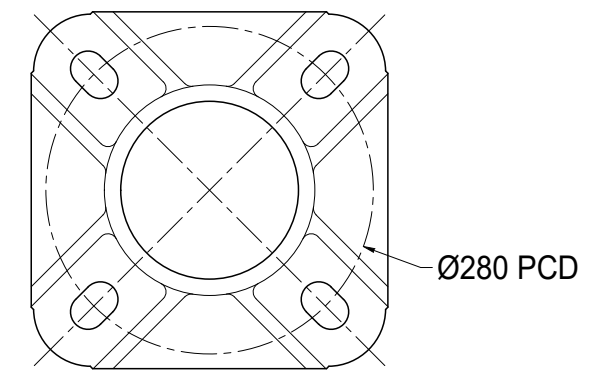
DRAWING No.
UA-0690

SHEET No.

ISSUE	C.O. No.	REVISION	LOCATION	BY	DATE



HATCH DETAIL
SCALE 5:1



BASE PLATE
CAST ALUMINIUM
SCALE 5:1

MATERIAL = ALUMINIUM 6063 T6
3.5 mm WALL SECTION



**Foundation bolts
M20 @ 280 PCD**

NOTE
All poles manufactured in accordance with relevant standards

Soil testing, footing design and certification services available on request.

NOTE
Finish = BRUSHED + CLEAR ANODISED 12-15 Um
Option = POWDER COAT

IP 65 rated electrical enclosures to be used for electrical connections.

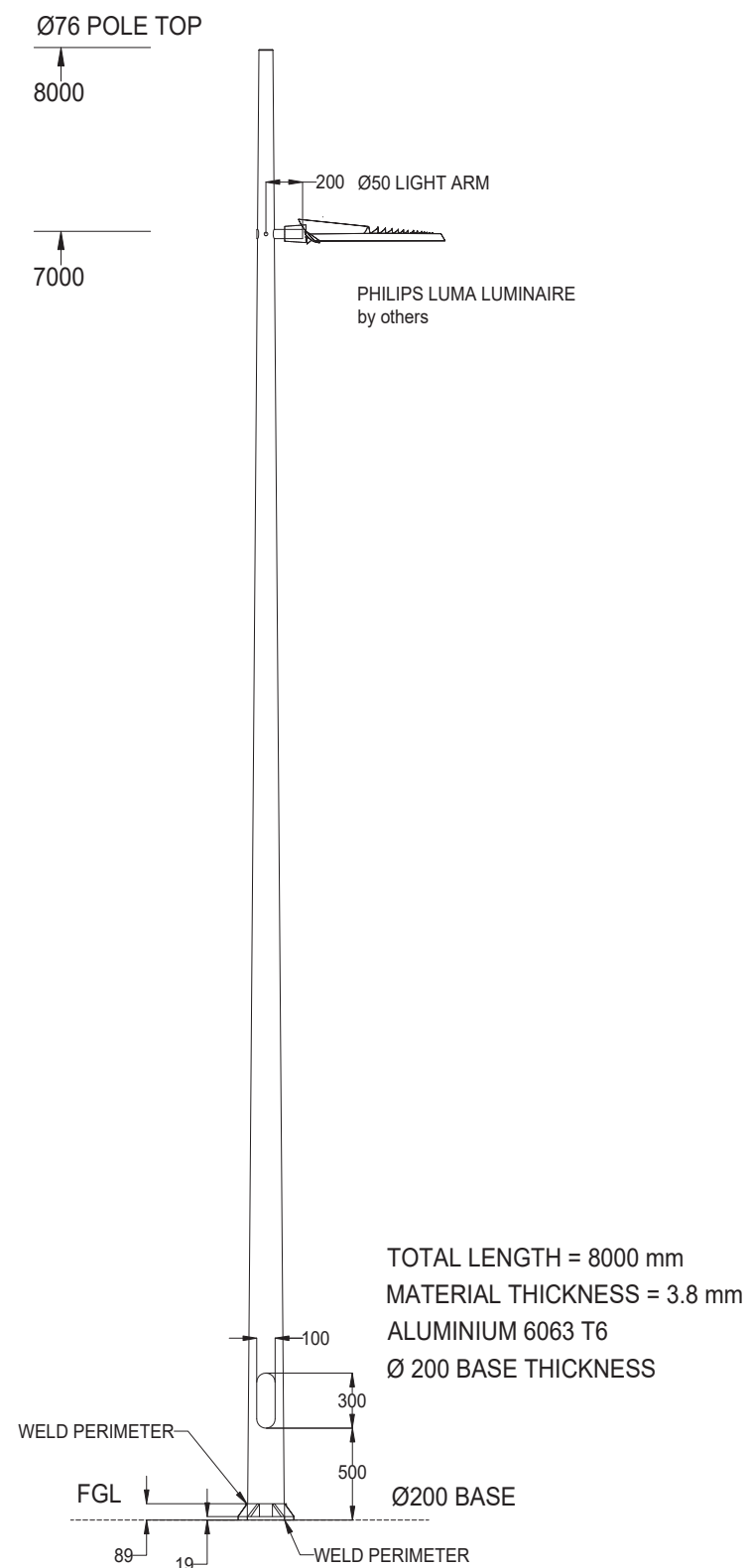
All buried components to be coated with DUREBILD STE 150 microns

DO NOT SCALE DRAWING DIMENSIONS IN MILLIMETRES		DRAWN BY AC	DATE 02/11/22	DOCUMENT No.
THIRD ANGLE PROJECTION		CHECKED BY	DATE	DISC FILE No.
DIMENSION TOLERANCES UNLESS OTHERWISE SPECIFIED		APPROVED BY	DATE	SCALE
2 PLACE DECIMAL 0.00 ± 0.1mm		QUALITY APPROVED BY	DATE	ISSUE
1 PLACE DECIMAL 0.0 ± 0.25mm				
0 PLACE DECIMAL 0 ± 0.50mm				
ANGULAR ± 15 MINUTES (0.25°)				

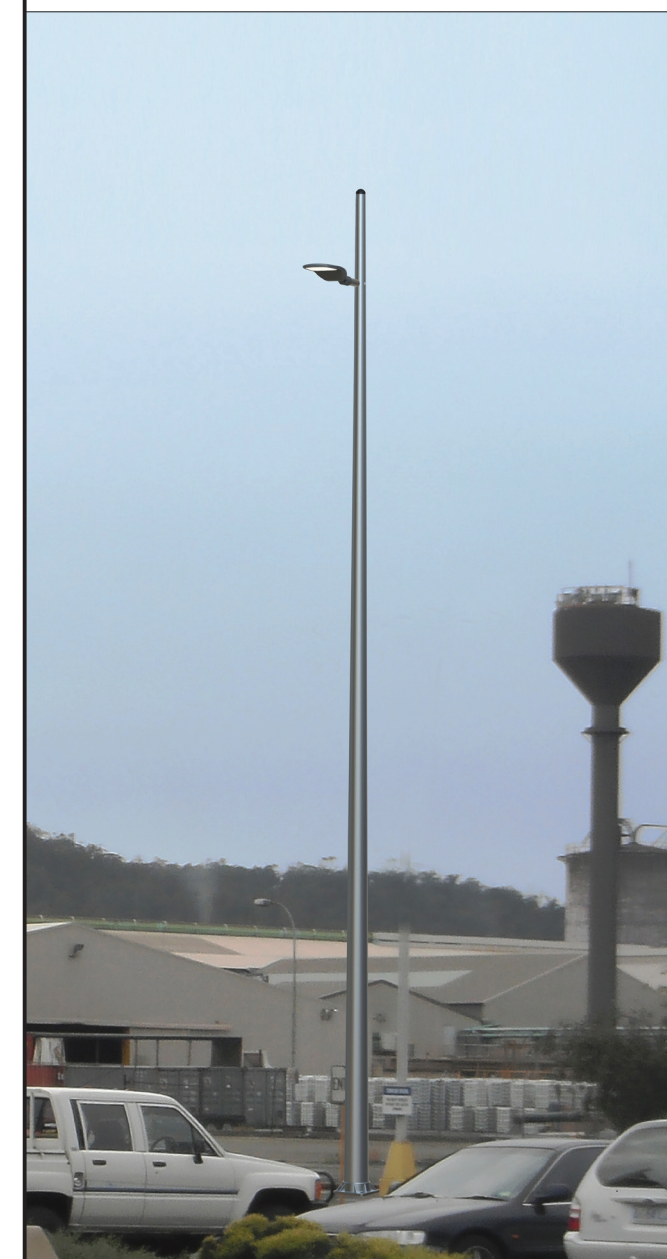
SHEET	Urban Aluminium Pty Ltd www.urban-al.com.au info@urban-al.com.au	Unit 30, 1 Talavera Road, Macquarie Park NSW 2113 AUSTRALIA	DATE RELEASED
			ITEM No.

TITLE STEM TAPER 7000	
PROJECT TAPERED POLES	DRAWING No. UA-0955
PART No.	SHEET No.

ISSUE	C.O. No.	REVISION	LOCATION	BY	DATE



FLUSH HATCH DETAIL



**Foundation bolts
M20 @ 300 PCD**

NOTE
All poles manufactured in accordance with relevant standards

Pole footings to be engineered by others to suit local environmental and ground conditions.

NOTE
Finish = Anodize Clear Satin 12-15Um

IP 65 rated electrical enclosures to be used for electrical connections.

All buried components to be coated with **DUREBILD STE** 150 microns

DO NOT SCALE DRAWING
DIMENSIONS IN MILLIMETRES

THIRD ANGLE PROJECTION

DIMENSION TOLERANCES UNLESS OTHERWISE SPECIFIED
2 PLACE DECIMAL 0.00 ± 0.1mm
1 PLACE DECIMAL 0.0 ± 0.25mm
0 PLACE DECIMAL 0 ± 0.50mm
ANGULAR ± 15 MINUTES (0.25°)

SHEET
Urban Aluminium Pty Ltd
www.urban-al.com.au
info@urban-al.com.au

DRAWN BY
AC

CHECKED BY

APPROVED BY

QUALITY APPROVED BY

Unit 10, 7 Gundah Rd, Mt Kuring-Gai
NSW 2080 AUSTRALIA
Tel. +612 8921 5400

DATE
28.5.19

DATE

DATE

DATE

DATE RELEASED

DOCUMENT No.

DISC FILE No.

SCALE

ISSUE

DATE RELEASED

ITEM No.

UrbanAluminium™
FUTURE SMART



TITLE
STEM 8 M TAPER 7 M LIGHT ARM

PROJECT
TAPERED POLES

PART No.

DRAWING No.
UA-0122

SHEET No.